

**General**

**Specifications**

Distributor (non-isolated)

**1. GENERAL**

This distributor for 2-wire transmitter provides functions of distributor and signal conversion. The instrument converts 4~20mA DC signals to current or voltage signals.

**2. SPECIFICATIONS**

<b>IO Specifications</b>	
Input signal	4~20mA DC
Input resistance	250Ω (100 kΩ when power off)
Permissible applied current	40mA max
Transmitter power supply voltage	26.5±1.5V DC (with current limit circuit at 25~35mA)
Permissible conductor resistance	$RL \leq (20\text{-minimum transmitter operating voltage})V/0.02A(\Omega)$
Output signal	DC current or voltage signal
Load resistance	Included in permissible conductor resistance
<b>Standard performance</b>	
Precision rating	±0.1% of span
Response speed	150ms 63% response (10~90%)
Insulation resistance	100MΩ min (at 500V DC) between input-output~power supply (DC drive) input-output~power supply~ground (AC drive)
Voltage withstand	500V AC/minute between input-output~power supply (DC drive) 1500V AC/minute between input-output~power supply~ground (AC drive)
Ambient temperature and humidity	Normal operating condition: 0~50°C, 5~90% RH Operating limit: -10~60°C, 5~95% RH Storage condition: -40~70°C, 5~95% RH (no condensation)
Power supply voltage	85~264V AC 47~63Hz, 24V DC ±10%
Effect of power supply voltage fluctuation	±0.1% max of span per 85~264V AC or 24V DC ±10% fluctuation
Effect of change in ambient temperature	±0.2% max of span per 10°C change in temperature
Current dissipation	24V DC 65mA (WA4A/V-1)
Power dissipation	100V AC 6VA (WA4A/V-2)
<b>Mountings and dimensions</b>	
Material	Case: ABS plastic
Boards	Both sides glass-epoxy
Mounting methods	Rack, wall, or DIN rail
Connection method	M4-screw terminals
External dimensions	72 x 48 x 127 mm (h x w x d)
Weight	DC drive: approx. 150g, AC drive : approx. 300g
<b>Accessories</b>	
Tag number labels: 1	
Mounting blocks: 2	M4 mounting screws: 4

WA4  -A  -  \*B

TYPE NO. \_\_\_\_\_

OUTPUT SPECIFICATION \_\_\_\_\_

A: Current

V: Voltage

INPUT SIGNAL \_\_\_\_\_

A: 4~20mA DC

Transmitter power supply : 25~28V DC

OUTPUT SIGNAL \_\_\_\_\_

WA4A                  WA4V

A: 4~20mA DC    6: 1~5V DC

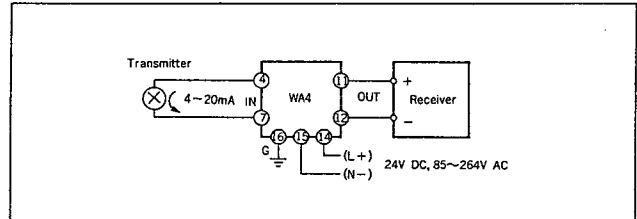
POWER SUPPLY \_\_\_\_\_

1: 24V DC±10%    2: 85~264V AC

**High Voltage Withstand Specifications**

The JUXTA W Series is also available in 2000V AC voltage withstand specifications. Contact your dealer for details.

**WIRING DIAGRAM**

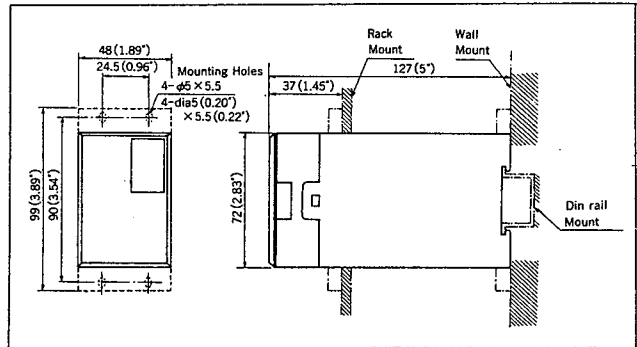


**OUTPUT RESISTANCE AND PERMISSIBLE LOAD RESISTANCE**

WA4A (DC Current Output)		
Output Signal	Output Resistance	Permissible Load Resistance
4~20mA DC	5MΩ min.	0~750Ω

WA4V (DC Voltage Output)		
Output Signal	Output Resistance	Permissible Load Resistance
1~5V DC	1Ω max	2kΩ min

**EXTERNAL DIMENSION**



Subject to change without notice for grade up quality and performance